

CHILD RESTRAINT SYSTEM

PRODUCT TYPE: S66

GROUP 0+ I II III

0-36kg



**IMPORTANT: READ THESE
INSTRUCTIONS CAREFULLY BEFORE
USE AND KEEP FOR FUTURE
REFERENCE.**

If these instructions are not followed, the
safety of a child may be severely endangered.

CATALOGUE

1. Notice.....	3	6.1.2 Installed in Rearward Facing Position with ISOFIX and Top Tether Group 0+I(0-18kg).....	20
2. Structure Name.....	5	6.2 Installed in Forward facing position.....	22
3. Product Information.....	6	6.2.1 Group I(9-18kg).....	22
4. Warning.....	7	6.2.1.1 Installed in Forward facing position with Belt or Belt and ISOFIX connector.....	22
5. Safety Seat Use Method.....	9	6.2.2 Group II III(15-36kg).....	23
5.1 Install location.....	9	6.2.2.1 Installed in forward facing position with ISOFIX connector and Belt or only Belt.....	23
5.2 How to Use the Harness Buckle.....	10	6.2.2.2 Installed in forward facing position with ISOFIX connector, Belt and Top Tether.....	25
5.3 Adjust the height of headrest and shoulder belts.....	11	7. CARE AND MAINTENANCE.....	26
5.4 Adjust Safety Belt Lengthen.....	12	8. MAIN TECHNICAL PARAMETER.....	27
5.5 Adjust the seat rotation angle	13		
5.6 Adjust the Angle of the Child Safety Car Seat.....	14		
5.7 Removing 5-Point Harness, sleeping pad and 5-point harness	16		
5.8 Removing Triangle Pad and Sleeping Pad.....	17		
5.9 Removing the Fabric Cover.....	18		
6. Installed in Car	18		
6.1 Installed in Rearward facing position.....	18		
6.1.1 Installed in Rearward facing position with Belt Group 0+(0-13kg).....	18		

1.NOTICE

When using as Universal category (Group 0+I II III), please notice below information:

This is a "Universal" child restraint. It is approved to Regulation No. 44, 04 series of amendments, for general use in vehicles and it will fit most, but not all, car seats.

A correct fit is likely if the vehicle manufacturer has declared in the vehicle handbook that the vehicle is capable of accepting a "Universal" child restraint for this age group.

This child restraint has been classified as "Universal" under more stringent conditions than those which applied to earlier designs which do not carry this notice.

If in doubt, consult either the child restraint manufacturer or the retailer.

Only suitable if the approved vehicles are fitted with lap/3 point/static/with retractor safety-belts, approved to UN/ECE Regulation No. 16 or other equivalent standards.

When using as Semi-universal category (Group 0+I II III), please notice below information:

This child restraint is classified for "Semi-universal" use and is suitable for the seat positions of the following cars:

CAR	FRONT	REAR
	Outer	Centre
(Model)	Yes	Yes No

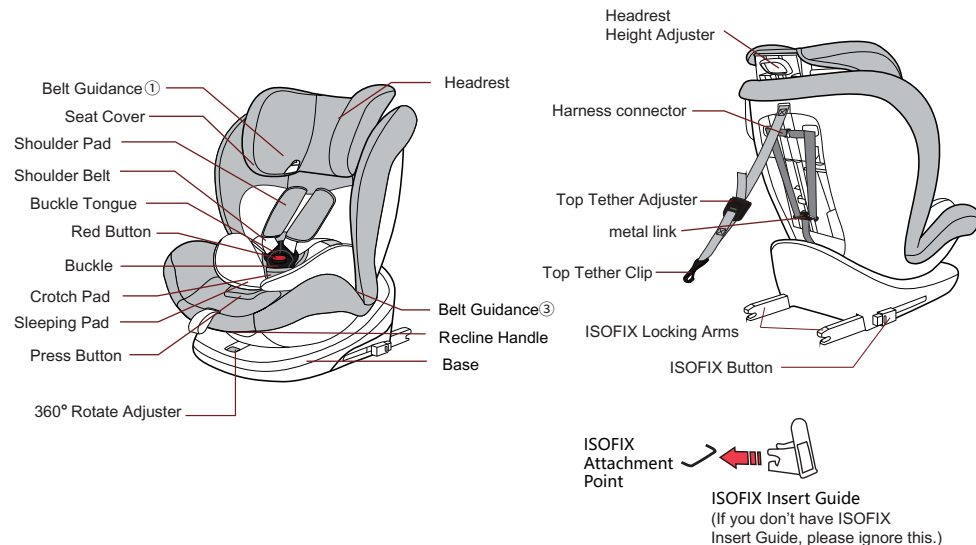
Seat positions in other cars may also be suitable to accept this child restraint. Please refer to the information documents or the retailer's website for the suitable car model list. If in doubt, consult either the child restraint manufacturer or the retailer any time. Only suitable if the approved vehicles are fitted with 3 point safety-belts and ISOFIX attachments, approved to UN/ECE Regulation No. 16 or other equivalent standards.

0-36 kg.

Notice regarding ISOFIX child restraint system (Group 0+I, Rearward-facing):

1. This is an ISOFIX CHILD RESTRAINT SYSTEM. It is approved to the Regulation No.44,04 series of amendments, for general use in vehicles fitted with ISOFIX anchorages systems.
2. It will fit vehicle with positions approved as ISOFIX positions (as detailed in the vehicle handbook), depending on the category of the child seat and of the fixture.
3. The mass group and the ISOFIX size class for which this device is intended is:
D for Group 0+(0-13kg) and Group I (9-18kg).

2.STRUCTURE NAME



3.PRODUCT INFORMATION

This product is a 360 degree rotating child restraint system.

The following information can help you better understand this product.

Tested and approved according to ECE R44/04		
Body Weight	Installation method	Installation direction
0+(0-13kg)	Adult seat belt	Rearward facing
0+I(0-18kg)	ISOFIX+Top Tether	
I(9-18kg)	Adult seat belt	Forward facing
	ISOFIX connector+Adult seat belt	
II III(15-36kg)	ISOFIX connector+Adult seat belt +Top Tether	
	ISOFIX connector+Adult seat belt	
	Adult seat belt	

4.WARNING

IMPORTANT! Please carefully read and make sure you understand all instructions in this manual and in the vehicle owner's manual related to child safety seats. Install and use the child safety seat as described in the instruction manual. Failure to do this could result in serious injury or death of your child. Keep the instructions together with the child restraint for future reference.

IMPORTANT! Because of potential medical issues inherent to low birth weight and premature infants, always have a trained professional doctor or hospital staff member assess the suitability of the child restraint prior to leaving the hospital or using the child restraint.

DO NOT use a child safety seat with damaged or missing parts.

DO NOT use damaged or frayed harness straps or vehicle belt.

NEVER use this child restraint with any other base except ones that the manufacturer permits.

DO NOT use a child safety seat that has been in a crash. A crash can cause damage to the child safety seat that you cannot see.

DO NOT use a second-hand child seat or child seat whose history you do not know.

DO NOT leave your child in this restraint for an extended period of time.

DO NOT use on vehicle seats that face the sides or rear of the vehicle. Use the child safety seat only on forward-facing vehicle seats.

Make sure the rigid items and plastic parts of a child restraint shall be so located and installed that they are not liable, during everyday use of the vehicle, to become trapped by a movable seat or in a door of the vehicle.

DO NOT use forward-facing before the child's weight exceeds 9kg.

Make sure any straps holding the restraint to the vehicle should be tight. Any straps restraining the child should be adjusted to the child's body. Make sure straps should not be twisted.

Make sure the lap strap is worn low down, so that the pelvis is firmly engaged to prevent child from falling out of the safety car seat.

DO NOT make any alteration or additions to the device without the approval of the Type Approval Authority, and a danger of not following closely the installation instructions provided by the child restraint manufacturer.

HOT! The child seat should be kept away from sunlight if the seat is not provided with a textile cover, otherwise it may be too hot for the child's skin.

DO NOT leave your child unattended in this restraint even for a short time.

Make sure any luggage or other objects liable to cause injuries in the event of a collision shall be properly secured.

DO NOT use the child restraint system without the cover.

DO NOT replace seat cover with any other than the one recommended by the manufacturer, because the cover constitutes an integral part of the restraint performance.

DO NOT use the child restraint system if position of the adult safety-belt buckle to the main load bearing contact points on the restraint is unsatisfactory, please contact the manufacture in doubt about this point.

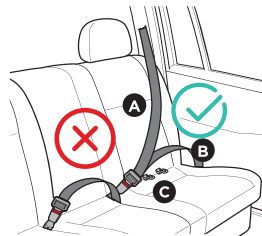
DO NOT use any load bearing contact points other than those described in the instructions and marked in the child restraint. please contact the manufacture in doubt about this point.

Please read the car manufacturer's handbook before installing this ISOFIX child safety seat.

5. SAFETY SEAT USE METHOD

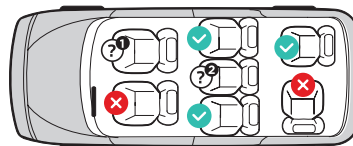
5.1 Install Location

5.1.1 When using as Universal category (Group 0+ I II III), this child restraint system is suitable for seatbelt models equipped with a three-point retractor that complies with ECE R16 and does not apply to models only equipped with 2-point seat belts.



- A** Car Safety Belt—Diagonal Belt
- B** Car Safety Belt—Lap Belt
- C** ISOFIX Attachments

5.1.2 When using as Semi-Universal category (Group 0+I II III), this child restraint system is suitable for seat belt models equipped with the three-point retractor that has passed the ECE R16 requirement and is not suitable for models only equipped with 2-point seat belts. And only after installed ISOFIX, then can use on it.

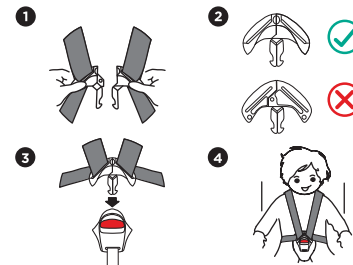


✓ Correct/ Proper ✗ Wrong/ Improper

- 1** When front the of the seat with opened airbag, cannot install in this place.
- 2** Only with 3-point seat belt and ISOFIX attachments can install in this place.

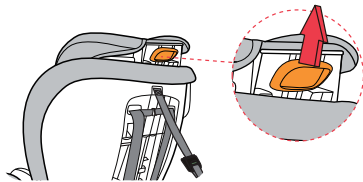
5.2 How to use the harness buckle

Hold the two buckle tongues together. Make sure the right side is up. Engage them before putting them into the harness buckle, which should make a **CLICK** noise. Pull shoulder straps to remove all slack from the lap section ensuring that the harness is lying flat and the harness buckle is locked. Open the harness buckle by pressing the red button.



5.3 Adjust the height of headrest and shoulder belts

If the height of headrest or shoulder belt is inconsistent with the required height, Pull the headrest adjustment handle upward and pull the headrest upward at the same time, You can adjust the height of the headrest and shoulder belt upward; Pull the headrest adjustment handle upward, at the same time, press the headrest down to adjust the headrest height (after adjustment, pull up and down the headrest to ensure that the headrest is locked)



ATTENTION!

A correctly adjusted headrest ensures optimal protection for your child in the safety seat:

The headrest must be adjusted so that the shoulder straps are at the same level as your child's shoulders.



Keep the lower edge of headrest as close as possible to the child's shoulder and keep a finger distance between the lower edge of headrest and child's shoulder.(see picture a)

5.4 Adjust Safety Belt Length

A Tighten Safety Belt

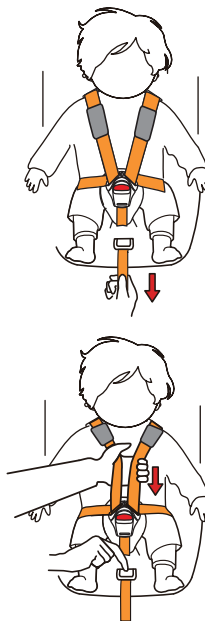
Pull up shoulder belt and the lap belt will tighten, then pull crotch belt to tighten safety belt.

Tighten the safety belt as much as possible without causing discomfort to the child. The lap belt is as low as possible and should put near child's crotch not abdomen.

P.S.: Loose safety belt is dangerous. Please check safety belt adjuster whether work, then tighten safety belt. After tightening the seat belt, adjust the shoulder pads to the appropriate position on the chest.

B Loosen Safety Belt

When pressing limited slide button, the other hand grasping shoulder belt which under shoulder pad (not grasp shoulder pad belt) to child right ahead to loosen safety belt.

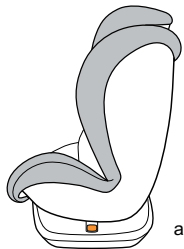


5.5 Adjust the seat rotation angle

Press the rotate button to rotate the child safety seat 360 degrees.

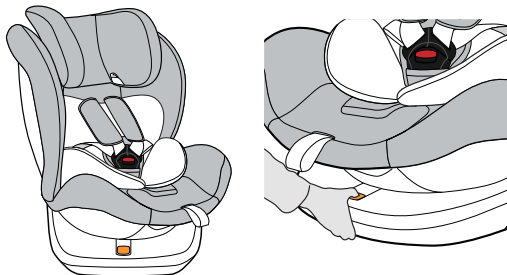
Note! After trip, rotate the seat in both clockwise and counterclockwise directions, To make sure that the rotating part of the child car seat is fully engaged.

NOTE! When used in rearward facing, you need to rotate the seat to a 90-degree position (as shown in Figure a), pull the recline handle, and adjust the angle to the most inclined position, then you can turn the seat to rearward facing position.



When the seat is rotated to 90°, as shown in figure a, the child can be placed on the safety seat.

NOTE! The car cannot be placed in this position when driving (see picture a).



5.6 Adjust the Angle of the Child Safety Car Seat

Pull the recline handle up which is in the bottom of body shell.

Pull the body shell at the same time, Then adjust the angle of the seat. The seat have 5 recline positions as shown in the figure below.

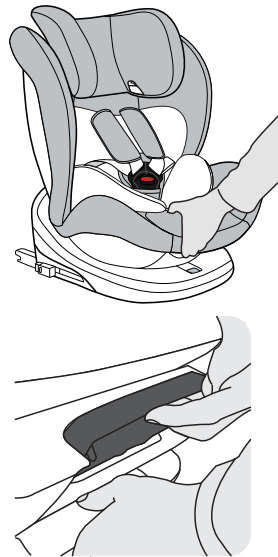
Different groups use different reclining levels.



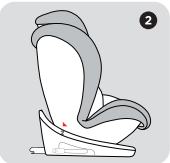


Rearward facing: Group 0+ I(0-18KG): Fifth Level

Forward facing: Group I(9-18KG): First Level to Fourth Level

Group II III(15-36KG): First Level

NOTE! You need to rotate the seat to a 90-degree position (as shown in P13 Figure a), pull the recline handle, and adjust the angle to the most inclined position, then you can turn the seat to fifth position. (see 5.5)



Installation of rearward facing	Installation of forward facing				
Group 0+I(0-18kg)	Group I(9-18kg)				
	Group II III (15-36kg)				
 Fifth Level (Lying Level)	 First Level	 Second Level	 Third Level	 Fourth Level	

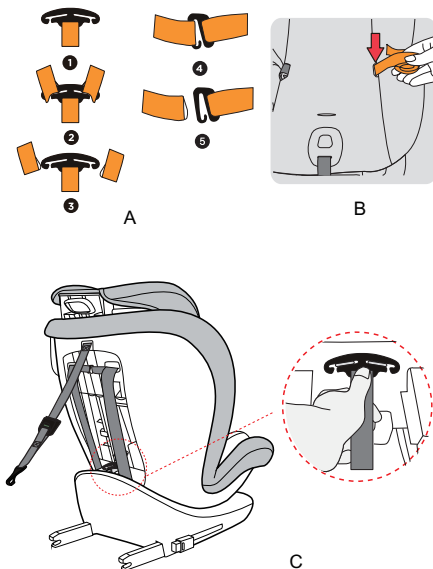
5.7 Removing 5-Point Harness , sleeping pad and 5-point harness

Step 1: Turn the child safety seat to the back, According to the sequence of ① ② ③ in picture A, the two shoulder belts from the metal link.

Remove the shoulder belt from the harness connector, according to ④ ⑤ in picture A, storage metal link to metal link area on the behind of the backrest. shown in picture C.

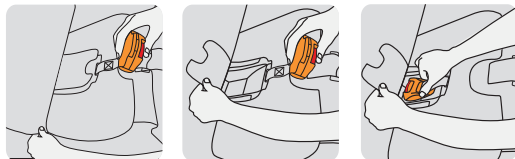
Then pull out the shoulder belt and harness from the seat hole, so that the shoulder belt and harness can be removed.

Then pull out the shoulder belt from the buckle on the front of the seat, And remove the sleeping pad , shoulder pad and buckle. Finally put redundant belt into cloth cover. (Picture B)



0-36 kg.

Step 2: push the buckle down from the front of the seat, and lift the cushion cloth cover, Take out the buckle from the cloth cover, and store the buckle according to the picture below (Picture D).

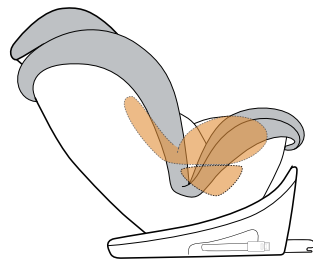


D

5.8 Removing Triangle Pad and Sleeping Pad

When your child's weight exceed 8kg, remove the triangle pad.

When your child's weight exceed 12kg, remove the sleeping pad.



5.9 Removing the Fabric Cover

1. Remove the 5-point harness.
2. Take off the cover from the backrest and base.
3. Move the headrest of the child seat up to the highest position.
4. First take the cover off the base of the headrest, then remove the cover of the headrest.

To re-fit the cover, simply follow the above steps in reverse.

CAUTION! Never use the child seat without it correctly installed.

CAUTION! Check that the harness straps are not twisted and that they have been correctly inserted in the belt slots of the cover.

6. INSTALLED IN CAR

6.1 Installed in Rearward facing position

Rotate the seat to 90 degree first, then use the recline handle to adjust the seat to the maximum

angle.

Later fix the seat in the rearward facing position.

6.1.1 Installed in Rearward facing position with Belt Group 0+(0-13kg)

Pull the vehicle seat belt, the diagonal seat belt section is bypassed from the back of the seat and passes through from the between of the headrest and backrest, the lap belt section through the belt guidance and under the sleeping cushion. Ensure that the buckle tongues are properly locked into the vehicle seat buckle - you will hear an audible **CLICK!**

Then adjust diagonal belt and lap belt as follows:

The side which can pull out belt:

Adjust the diagonal seat belt section is through from the between the headrest and the backrest.

The side which can insert buckle:

Fasten the seat belt and pull it tight, ensuring that the seat belt is not twisted.

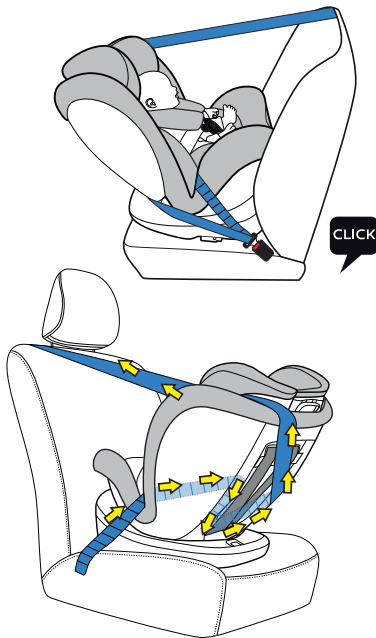
Note: Once the safety belt of some models is pulled out a certain length, If you need to increase the pull-out length, it will not be achieved. In this case, the seat belt must be fully rolled up and pulled out again to the required length.

Finally, check the safety seat to ensure it is firmly fixed on the car seat.

To make sure that the car seat has been installed correctly, please shake it before use.

If shaking or loosening is found, you must retighten the safety belt until the safety seat is stable.

Warning: the car safety belt must not be twisted after installation.



6.1.2 Installed in Rearward Facing Position with ISOFIX and Top Tether

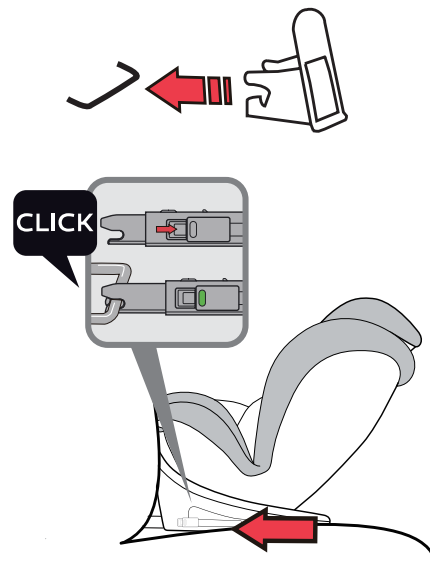
Group 0+I(0-18kg)

Put the ISOFIX insert guide into the two ISOFIX attachment points of your vehicle.

If you don't have ISOFIX insert guide, please ignore this step.

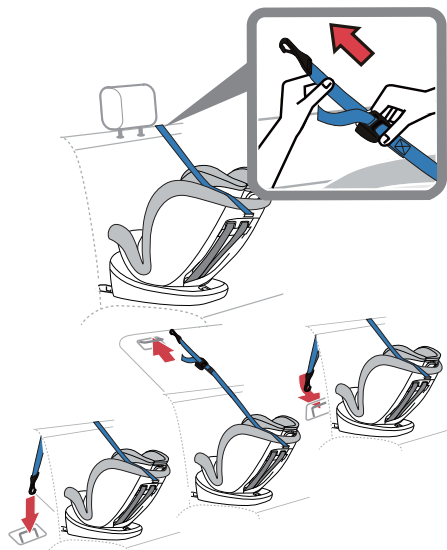
NOTE: The ISOFIX attachment points are located between the surface and the backrest of the vehicle seat.

Press the ISOFIX button to pull out the two locking arms from the base bottom. Pull the locking arm to and fro until you hear an audible **CLICK** which indicates they are fully engaged. And on both sides of the locking arms button turn into green safety color.



Pull out the top tether, and press the release button, pull the top tether long enough to hang the latch on the back of the car seat.

Fix the latch on the fixed point, and the position of the fixed point are shown in the picture (one of the three positions). Make sure the top tether clip is tightened up.



6.2 Installed in Forward facing position

6.2.1 Group I (9-18kg)

6.2.1.1 Installed in Forward facing position with Belt or Belt and ISOFIX connector

Put the ISOFIX insert guide into the two ISOFIX attachment points of your vehicle.

If you don't have ISOFIX insert guide, please ignore this step.

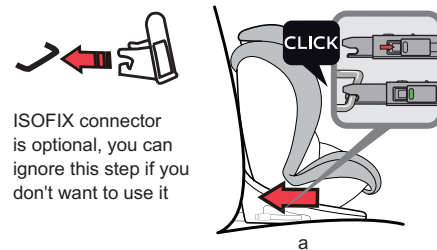
NOTE: The ISOFIX attachment points are located between the surface and the backrest of the vehicle seat. Press the ISOFIX button to pull out the two locking arms from the base bottom. Pull the locking arm to and fro until you hear an audible CLICK which indicates they are fully engaged. And on both sides of the locking arm's button turn into green safety color.

At this time, you can push it as far as possible into the back of car seat. Pull out the belt from belt ALR slowly. Shoulder belts pass through the gap between the headrest and the seat back, one side of diagonal belt through the backrest and Belt Guidance^③.

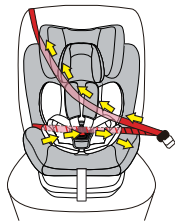
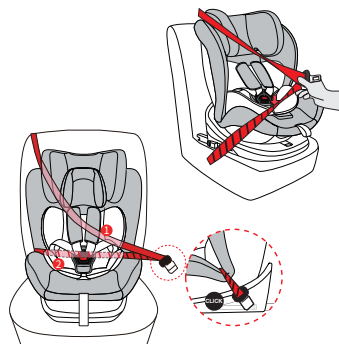
Another Side along upper inside. Lap belt pass through Belt Guidance^③ on both sides. Using your knee to press down on the child seat, tighten the vehicle seat belt as follows: Pull on the lower part of the diagonal seat belt section near the vehicle seat buckle to tighten the lap belt section.

Note: ① The path should be between the headrest, the sleeping pad and the back of the seat.

② The path should be between the sleeping pad and the cover of the seat. (see p23 picture a)



ISOFIX connector is optional, you can ignore this step if you don't want to use it



a

6.2.2 Group II III(15-36kg)

6.2.2.1 Installed in forward facing position with ISOFIX connector and Belt or only Belt

NOTE: When you use this safety car seat in group II III, please remove the 5-point harness, refer to Chapter 5.7 Place the child seat forward facing on the vehicle seat (in the direction of travel). Put the ISOFIX insert guide into the two ISOFIX attachment points of your vehicle. If you don't have ISOFIX insert guide, please ignore this step.

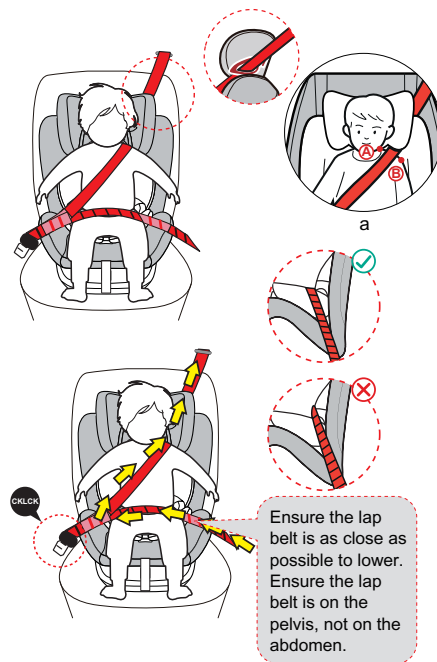
NOTE: The ISOFIX attachment points are located between the surface and the backrest of the vehicle seat.

Press the ISOFIX button to pull out the two locking arms from the base bottom. Pull the locking arm to and fro until you hear an audible CLICK which indicates they are fully engaged. And on both sides of the locking arms' button turn into green safety color.(see p22 picture a)

First pull out the belt from the belt ALR. Diagonal belt through the same side of belt guidance①, lap belt through the same side of belt guidance③, then pull the diagonal belt and lap belt together through another side of belt guidance③.

NOTE: Keep the diagonal belt at the position of shoulder between the outside of the neck and shoulder(Middle of point A and B).(see p26 picture a) Lock the tip of the buckle into the vehicle seat buckle with a CLICK noise. Follow the direction of arrow to tighten belt, and put redundant belt into cloth cover. Shake the child safety car seat to make sure it is securely attached.

CAUTION! The diagonal seat belt section must run diagonally backward. You can adjust the course of the belt with your vehicle's adjustable belt deflector on both sides.



0-36 kg.

6.2.2.2 Installed in forward facing position with ISOFIX connector, Belt and Top Tether

Put the ISOFIX insert guide into the two ISOFIX attachment points of your vehicle.

If you don't have ISOFIX insert guide, please ignore this step.

NOTE: The ISOFIX attachment points are located between the surface and the backrest of the vehicle seat. Press the ISOFIX button to pull out the two locking arms from the base bottom. Pull the locking arm to and fro until you hear an audible CLICK which indicates they are fully engaged. And on both sides of the locking arm's button turn into green safety color.

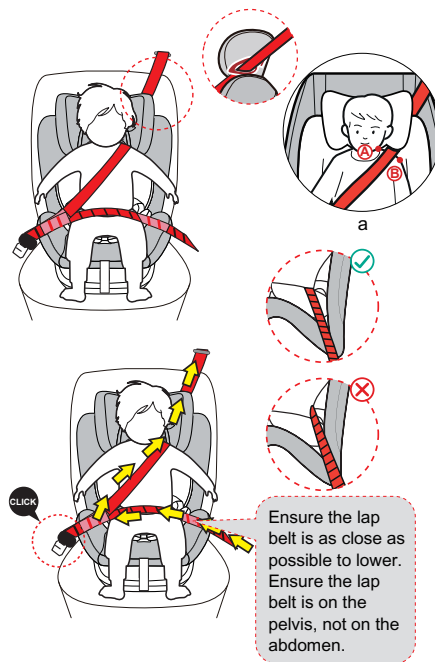
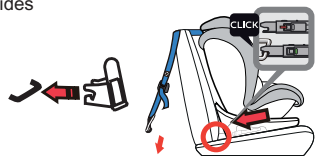
Pull out the top tether and press the release button, pull the top tether long enough to hang the latch on the back of the car seat.

Fix the latch on the fixed point, and the position of the fixed point are shown in the picture (one of the three positions). Make sure the top tether clip is tightened up.

First pull out the belt from the belt ALR. Diagonal belt through the same side of belt guidance^①, lap belt through the same side of belt guidance^③, then pull the diagonal belt and lap belt together through another side of belt guidance^③.

NOTE: Keep the diagonal belt at the position of shoulder between the outside of the neck and shoulder (Middle of point A and B). (see p27 picture a) Lock the tip of the buckle into the vehicle seat buckle with a CLICK noise. Follow the direction of arrow to tighten belt, and put redundant belt into cloth cover. Shake the child safety car seat to make sure it is securely attached.

CAUTION! The diagonal seat belt section must run diagonally backward. You can adjust the course of the belt with your vehicle's adjustable belt deflector on both sides



7. CARE AND MAINTENANCE

Periodically inspect your child seat for worn or damaged parts. If damaged parts are found, replace the child seat. Keep the child seat clean. Do not lubricate any parts of the child seat.

To prolong the life of your nursery product, keep it clean and do not leave it in direct sunlight for extended periods of time.

Removable fabric covers and trims may be cleaned using warm water with a household soap or a mild detergent. Allow it to dry fully, preferably away from direct sunlight.

CLEANING THE BUCKLE

Food, drink, or other debris may collect inside the harness buckle which can affect proper functioning. Wash in warm water until clean. Be sure you can hear an audible click to make sure the buckle is working properly.

CLEANING THE HARNESS AND SHELL

Sponge clean using warm water and mild soap; do not use any other cleaning agents.

STORAGE

Store in a safe, dry place and away from heat and direct sunlight. Avoid placing heavy objects on top of the seat.



MAXIMUM WASH
TEMPERATURE 30°C



DO NOT DRYING



DO NOT BLEACH



DO NOT IRON



DO NOT DRYCLEAN



DRY FLAT IN SHADE PLACE

8.MAIN TECHNICAL PARAMETER

Length : 466mm

Width: 440mm

Height: 577-774mm

