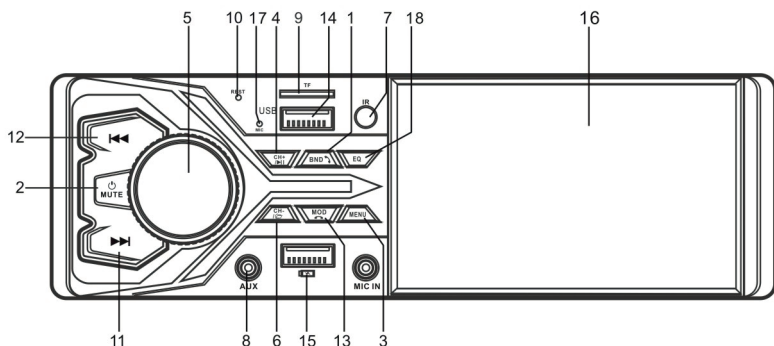


CAR AUDIO

INSTRUCTION MANUAL

USB/TF/MP5/RADIO PLAYER



- 1.BAND/AMS/AV/answer the phone
- 2.Power on / off / Mute
- 3.MENU
- 4.CH+ / Pause in USB/SD mode
- 5.Volume button/ Sound effect change
- 6.CH- / choose last folder
- 7.Remote Control receive window
- 8.AUX in
- 9.TF Slot

- 10.Reset
- 11.Radio search forward/Next song
- 12.Radio search backward/previous song
- 13.Mode/Ring off
- 14.USB Slot
15. Fast charge USB
16. HD TFT Screen
17. MIC
18. EQ

1.Basic function

1.POWER: Short press this button to power on , After power on. Short press to power off the unit.

2.BAND: In radio mode, short press this button to change the band: FM1-FM2-FM3. Long press to search and save the radio station automatically. In the Bluetooth mode. Short press to answer the phone.

In USB/SD mode. Short press this button to change the playing format, as follows: MP3 Audio/JPG/MP5 Video.

In the video mode. Long press to AV output.

In Bluetooth mode. Short press this button to show the latest phone call number. And you can make a call by the remote control (0---9 number). And press again you can dial.

3. Search and scan the radio/ Long press to save the radio station automatically
In the radio mode, short press this button to search the radio. Long press to save the radio station automatically . Press CH+ and CH- to choose the radio station

4.Mode/Ring off

Short press this button to the mode . FM/USB/AUX/BT mode. In the bluetooth mode. Short press to ring off the phone.

5.MENU: Short press to go into the main menu

(1)You can choose the radio/USB/SD/ AUX format by Volume knob . after you choose the mode. Short press the volume knob to confirm the mode.

6.Radio search backward/previous song

In the radio mode . Short press to choose the radio station backward .Long press to search the radio station automatically . It will stop when get the radio.

In the MP3 mode. Short press last song. And long press to fast backward .

7. Choose next radio / choose next folder

In the radio mode . Short press to choose the radio station forward .Long press to search the radio station automatically . It will stop when get the radio.

In the MP3 mode. Short press next song. And long press to fast forward .

8.CH+/ Pause in USB/SD mode

In the radio mode . Short press to choose the next radio station . In the USB/SD mode. Short press is pause function.

9. CH- / choose last folder

In the radio mode . Short press to choose the last radio station . In the USB/SD mode. When in video/ pictures. Short press to choose the folder

10.Volume button/ SEL

Turn this button to control the volume. Short press repeatedly to change the sound effect as follows:

BASS—TREBLE—BAL—FAD---EQ OFF/ON---LOUD OFF/ON . When you choose the mode you need , you can turn left or right Volume Knob to select.

Long press this button to go in the main MENU.

11.Clock

Short press to show the time for 10 second .

When the system is crash, you press this to restart.

Short press mode button to go to AUX in, you can play external music by inserting] in this Aux in hole.

Insert SD/MMC s into SD/MMC slot(TF slot). it will read the music /Vedio . picture

Insert U disk into USB Slot. it will read the music /Vedio . picture. in U disk.

Support audio format: WMA.MP3.AAC.OGG.FLAC.APE.AC3.ATRA.DTS.

Support Video format: MKV.AVI.MOV/MP4.TS.ASF.FLV.PMP.RMVB.MPG/VOB.WMV.

Support Image format: BMP,JPG,GIF.PNG.

Short press this button to power on , After power on. Short press is mute function.

17. Fast charge USB

This USB slot only for cellphone charge .

1. Power/off

2. Radio memory number/

MP3 songs select number

3. Long press is random play function.

4. EQ

5. Previous song

6. Volume increase

7. Pause/Play

8. Mode

9. Mute

10. Scan

11. Repeat

12. Last folder

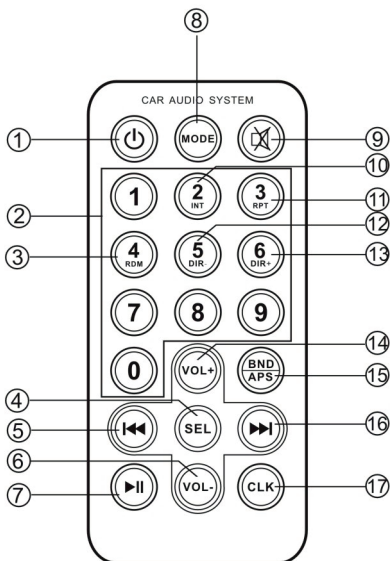
13. Next folder

14. Volume increase

15. Band switching/Auto-search

16. Next song

17. Clock



3. Technical Parameters

FM Tuner Part:

Frequency Range-----87.5MHz-108MHz
noise-limited sensitivity-----FM≤15dB
signal to noise ratio (S/N)-----≥50dB

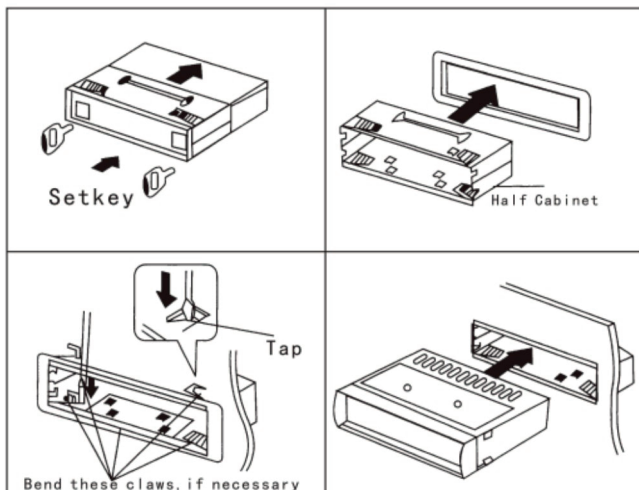
AM Part

Frequency Range-----522KHz-1620kHz
noise-limited sensitivity-----≤35dB
signal to noise ratio (S/N)-----≥40Db

USB/MMC/SD Part:

Frequency Response-----100Hz-10kHz(+10dB)
signal to noise ratio (S/N)-----≥45dB
Channel balance-----≤3 dB
Channel Separation ----- ≥35dB
Speaker impedance -----4Ω-8Ω
Real power output----->60W
Working voltage -----12V DC
Size dimension-----180mm(W)x52mm(H) vx115mm(L)

4. Installation Diagram



5. Trouble shooting

| Fault | Reasons | Solutions |
|-----------------------|--|--|
| LCD doesn't display | <ol style="list-style-type: none"> Yellow wire is not connected with battery + Fuse of red wire is open | Assure yellow wire is connected with battery + Replace fuse |
| No sound | <ol style="list-style-type: none"> No power supply Speaker wire is open circuit SD/MMC card, U disk don't have song with corresponding format. SD/MMC card, U disk golden finger is dirt which causes bad contact. | Connect the power wire. Connect speaker wire. Check the contents of SD/MMC card, U disk. Clean with absolute alcohol. |
| Low sound (not clear) | <ol style="list-style-type: none"> Power internal resistance is high. Antenna is bad contact. | Replace the power supply Tighten the antenna plug. |
| Mono track | <ol style="list-style-type: none"> One channel of speaker wire is open circuit Amplifier integrated circuit is damaged. | Connect speaker wire Replace the IC of amplifier |

Note: Technical data is subject to change without prior notify.

6. Wiring Diagram

