

## Installation Manual

### **XM-V417** **XM-V418**



Thank you for purchasing one of our XOMAX products!  
We appreciate your confidence. Enjoy your brand new multimedia unit!



Please read the following manual carefully before you install and use the unit. Please save this manual in case you will need to clarify further possible questions regarding installation and usage of our product.

We recommend you to let the technician install the unit in your vehicle.

You can find the detailed manual for your XOMAX product on our homepage:  
[www.xomax.de/download](https://www.xomax.de/download)

## Table of contents

### Safety instructions and precautions 3

Usage of the screen .....	3
Handling by stop only.....	3
Installation .....	3
Regular loudness .....	3
Repair of the unit.....	3
Power supply .....	3
Replacement of fuses .....	3
Overheating.....	3
Regular temperature .....	4
Cleaning of the unit .....	4
Moisture .....	4
Steering wheel remote control connection.....	4

### Installation 5

#### Installation instructions 7

1) Installation steps .....	7
2) Fixture of the installation frame....	8
3) Connect the unit.....	8

#### Deinstallation instructions 9

1) Prepair the instruments .....	9
2) Use the extraction keys .....	9
3) Unloose the unit .....	10
4) Remove the unit.....	10

### Connection schedule: Cinch multicore 11

### Connection schedule: ISO plug 12

#### Connection schedule: ISO plug configuration 13

Socket A (power supply).....	13
Socket B (loud speakers).....	13

#### Rear view camera and steering wheel remote control 14

Connect control cable for rear view camera: .....	14
Connect steering wheel remote control: .....	14

### Common solutions 15

#### Recycling of an old unit 17

#### Recycling of the battery 17

## Safety instructions and precautions

### Usage of the screen

THIS IS NOT TOUCHSCREEN !

Do not press with the finger the screen – it may lead to image distortions, unit malfunctions and screen damages.

### Handling by stop only

To avoid any accidents please don't handle the unit while you driving. Please stop and park the vehicle at safety place and handle the unit casually.

### Installation

Please read the following manual carefully before you install the unit. We recommend you to let the technician install the unit in your vehicle.

### Regular loudness

Please set the loudness of the unit to the appropriate level so you were still able to hear exterior noises especially traffic warning signals. Furthermore the higher loudness level can damage your hearing organs.


### Repair of the unit

Do not open the unit. Do not try to repair the unit by yourself due to any emerging technical problems. While opening the unit by yourself exists the

danger to be electrocuted.

Do not use the unit any further since you detect any kind of technical problems.

Leave all the repair operations to professional technicians.

 Due to flawed warranty seal the warranty becomes invalid.

### Power supply

Use the unit connected only to 12 Volt on-board power supply. The minus (-) should be connected with the ground (GND) (negative).

Due to the wrong configuration exists the danger of fire. In case of doubt please consult with professional technicians.

### Replacement of fuses

While replacing the fuse please make sure that the new fuse has the same properties as the old one, especially the amperage.

### Overheating

Do not occlude the vent holes to avoid the heat generation and accumulation in the unit. Otherwise exists the danger of fire.

### Regular temperature

Please make sure that the temperature inside the vehicle is not less than 0° C and not more than +40° C.

If it's too cold or too hot inside of the vehicle, do not turn the unit on until the inside temperature of the cabin descends.

### Cleaning of the unit

Please keep the unit clean and remove the dust from it regularly. Please use for that a soft and dry cleaning rag.


Major soilings can be removed carefully with the wet cleaning rag. Do not use any chemical or alcohol-containing detergents to avoid the damage of the unit's varnish.


### Moisture

To avoid the danger of fire or the electric shock do not put the unit in to the moist environment (e.g. adverse weather conditions, inappropriate wet cleaning etc.)

### Steering wheel remote control connection

Please refer to the operating instructions of your vehicle for assistance in connecting the steering wheel remote control.

 To connect the steering wheel remote control, you need a Can-Bus adapter for your vehicle. You can buy this from a specialist dealer for spare parts for your vehicle.

 Please only have the steering wheel remote control connected by a specialist or specialist workshop. Connection errors can cause serious defects in the device and in the vehicle electronics.

Defects caused by connection errors are not covered by the warranty.

## Installation



We recommend you to let a professional technician install the unit in your vehicle.



### **WARNING!**

**Please read these advices carefully before installation procedure.**

**The damages caused by an inappropriate installation are not covered by warranty.**

**To avoid the risk of losing the warranty please let a specialist accomplish the installation of the unit.**

» To avoid a short circuit please disconnect the vehicle battery before the installation. To do it properly please read the manual of the vehicle.

» Please be aware that this unit has an SingleDIN standart size. Make sure that your vehicle is equipped with an installation cell of required size.

» As may be the case you will need a suitable faceplate, adapter or other accessories. These could be provided from your local specialist supplier.

» The connection cables may not be cutted or short-circuited. Otherwise the warranty becomes invalid.

» Before the installation please make sure that the vehicle has the 12 Volt on-board power supply.

» The minus (-) should be connected with the ground (GND) (negative).

» Please tag the polarity of the available speakers before you disconnect the vehicle battery.

» A proper grounding of the unit's housing requires a clean ground connection. Thus the grounding area should be rust-, stain- and dust-free.

» Please ground the cable separately from other heavy current devices such as an amplifier etc.

» Please ensure that the coloured cables are connected according to the wiring diagram. The wrong wiring may lead to malfunctions or even damages of the electric elements of the vehicle.

» Please note that the connection cables of this unit and of the other devices may have the same purpose but the different colour. For this reason while connecting this unit with the other devices please ensure that both of the cables in each case have the same purpose. To configure everything correctly please refer to the manuals of the both devices.

» Please ensure that the negative speaker cable is in each case plugged into the negative speaker socket of the ISO interface. Do not ever connect the negative speaker cables with the vehicle body.

» This unit is designed and construed

for connection with 4 speakers. Do not combine this unit with devices that are designed and construed for connection with 2 speakers.

» The speakers should feature the impedance of 4-8 Ohm and a sufficient wattage.

» Please ensure that the speakers you are connecting with the unit are intact. Damaged speakers can impair the unit.

» To avoid a short circuit please isolate all cable junctions and endings of the unused cables with the electrical tape.

» All the cables should be layed and fixated tidy and properly. The cables should not contact any movable or hot objects.

» If the vehicle doesn't have an "ACC" ignition position, please connect the red cable with the ignition switch. Otherwise the unit does not turn off automatically, causing the discharging of the vehicle battery.

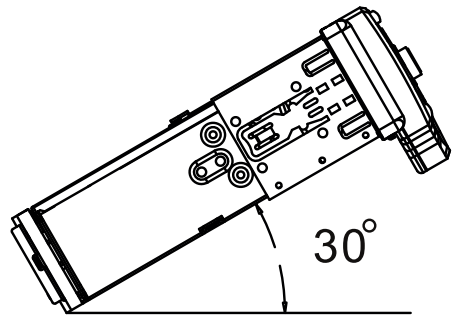
» To avoid a rogue and hazardous short circuit do not lay the yellow cable through the engine bay in order to connect it with the vehicle battery.

» Do not ever connect speaker cables among one another. In case you do not want to connect all the 4 speakers with the unit please isolate the endings of unused cables with the electrical tape to prevent a short circuit.

» Do not ever connect the negative speaker cables with the vehicle body.

» To ensure a flawless performance of

the unit the intergration angle should amount to +/- 30°.

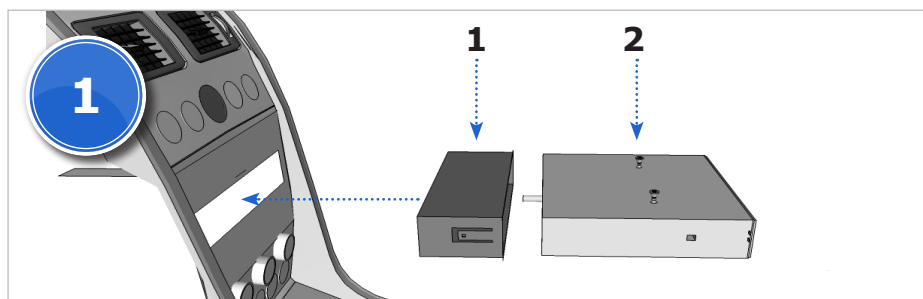


## Installation instructions



Please note, that this installation manual was generalized attending to provide you with the common indispensable information. Therefore it might cause from product to product some irrelevant discrepancies, especially regarding some depictions (e.g. installation accessories)

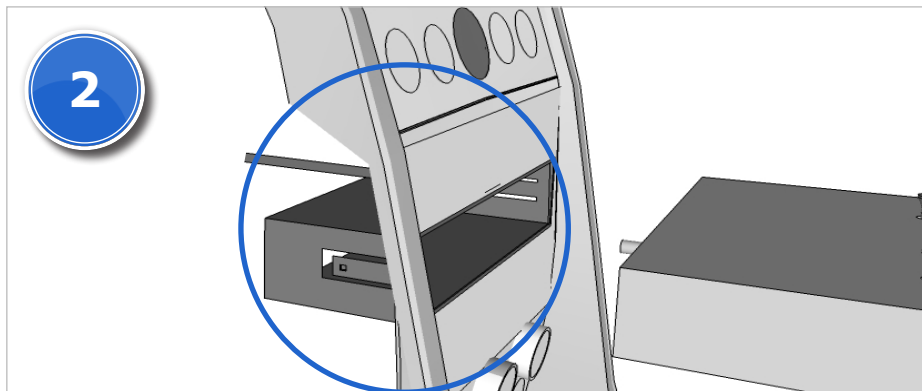
You can find the detailed manual for your XOMAX product on our homepage:  
[www.xomax.de/download](http://www.xomax.de/download)



### 1) Installation steps

1. installation frame \*
2. unit

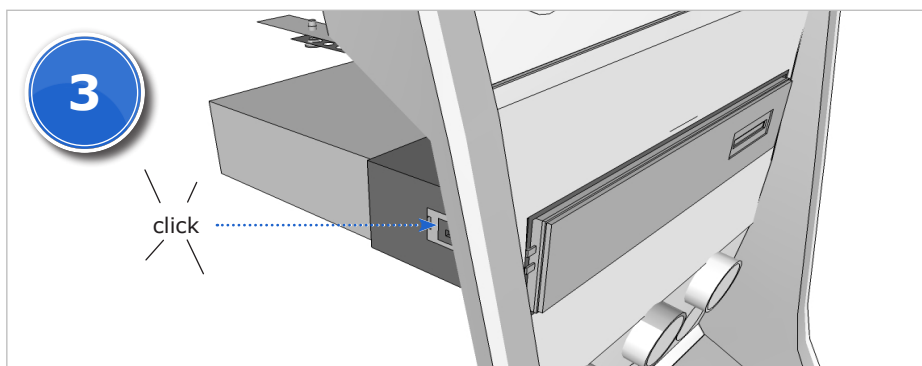
\* - Installation frame is already firmly fixed to the unit's housing by delivery



## 2) Fixture of the installation frame

Please remove first the installation frame (if it's included in delivery) from the unit. Please use for that the extraction keys (see page 9). Possibly the faceplate should be removed as well.

Please insert the installation frame in the installation cell (car radio slot). Then bend all the cogs outwards to fixate the frame inside the cell (slot).



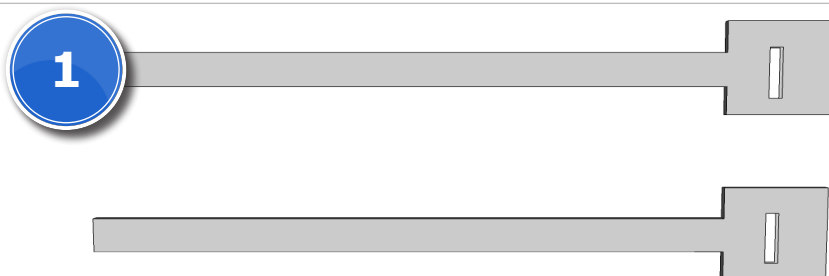
## 3) Connect the unit

Please connect the ISO cable first with the ISO plug of the unit, then with the one of the vehicle. Do not forget to connect the radio aerial.

Now slide the unit carefully into the already fixated frame till it clicks into place.



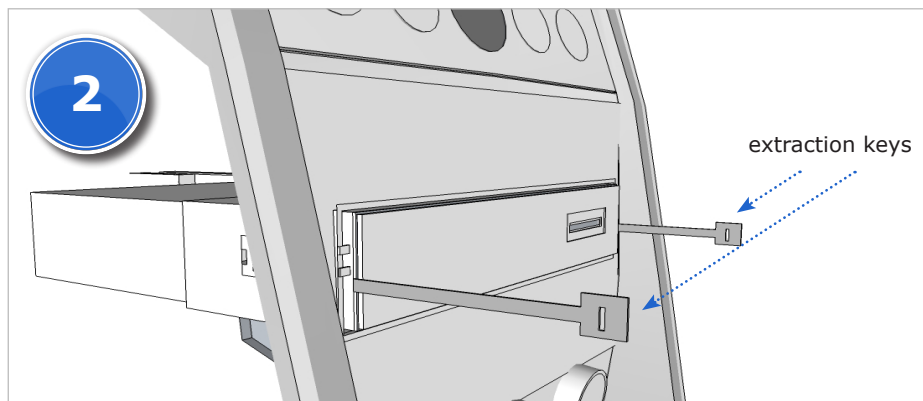
## Deinstallation instructions



### 1) Prepare the instruments

To deinstall the unit you will need a spanner (a wrench) to unloose the fixation nut and 2 extraction keys (optional)

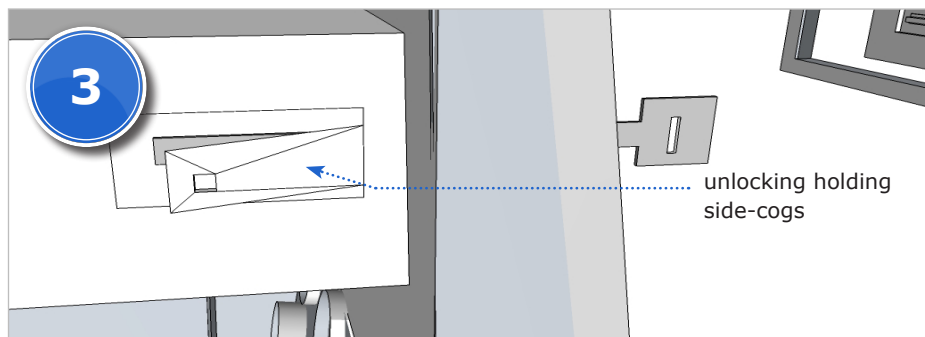
to release the unit from the installation frame.



### 2) Use the extraction keys

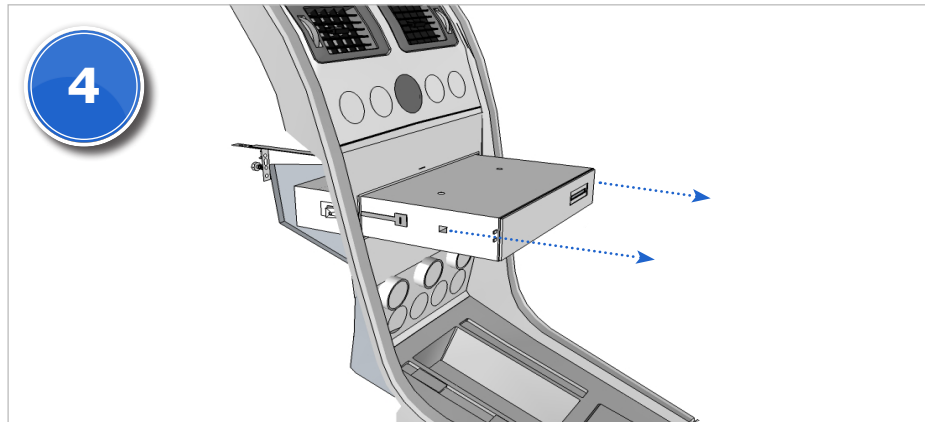
Please insert the extraction keys into the dedicated recesses between the installation frame and the unit's housing.

In each case the key should be inserted centered, the inserting point should be equally distanced both from the top and from the bottom.



### 3) Unloose the unit

When and as long as inserted, the extraction keys press the holding side-cogs outwards so that the unit is released from the installation frame and can be carefully pulled out.



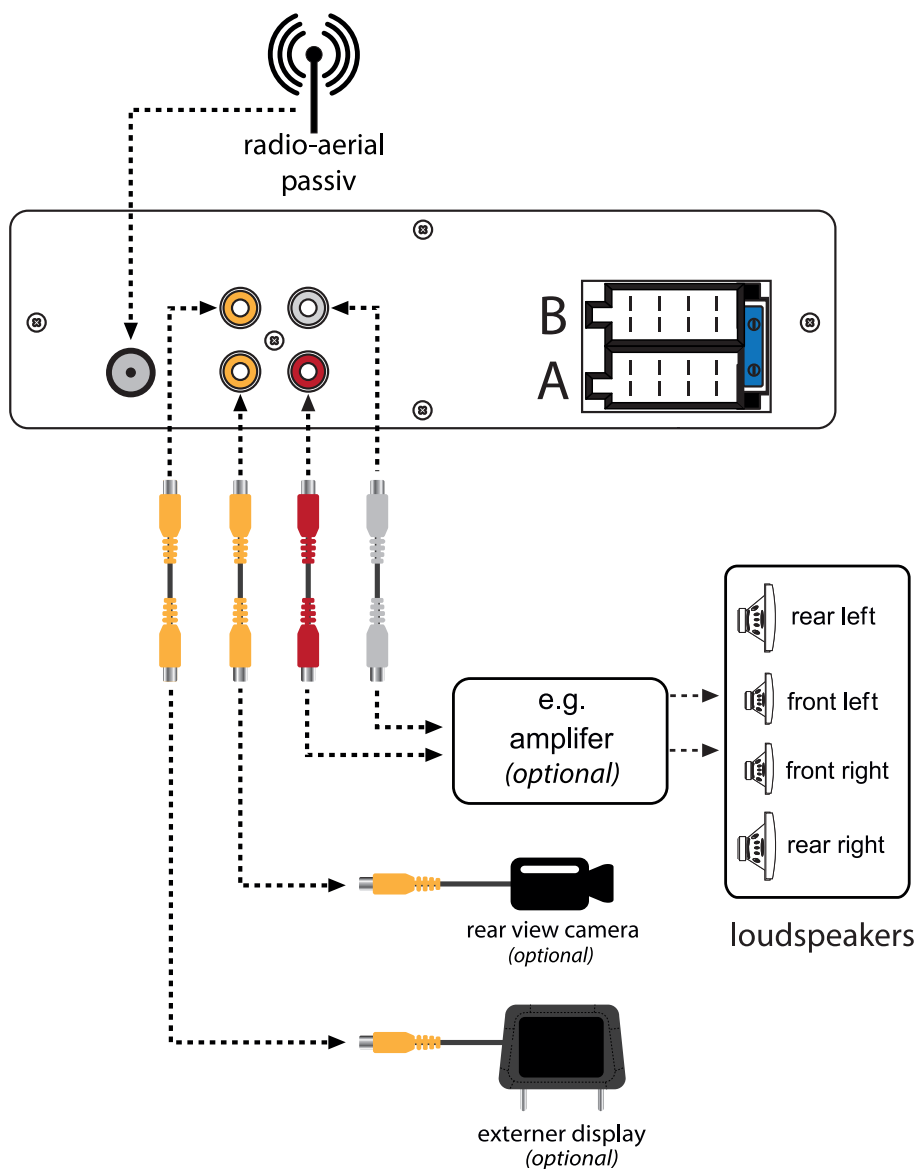
### 4) Remove the unit

Now pull the unit carefully out of the installation frame or out of the car radio slot in case the frame was already firmly fixed to the unit by delivery.

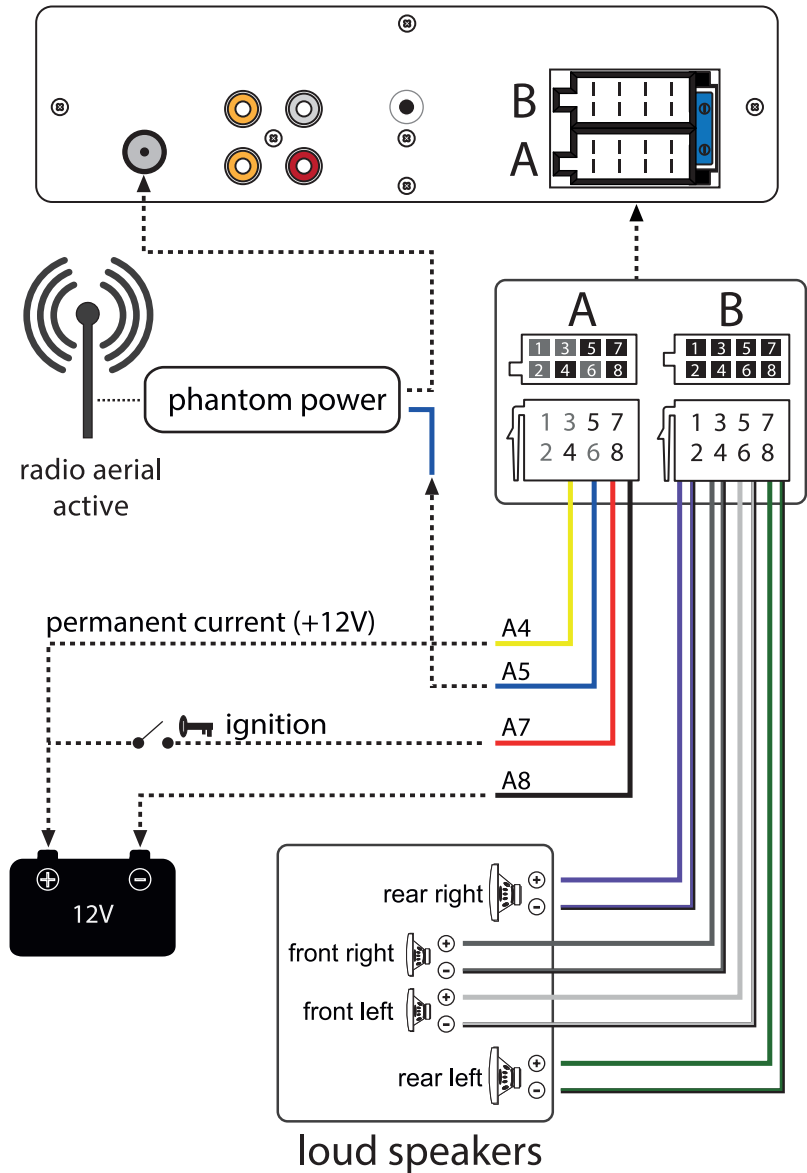
Afterwards please disconnect all the cables incl. the ISO multicore.

Finally remove all the installation accessories such as fixation metal sheet and installation frame.

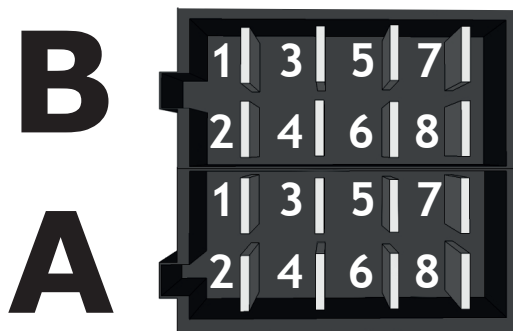
## Connection schedule: Cinch multicore



Connection schedule: ISO plug



## Connection schedule: ISO plug configuration



### Socket A (power supply)

On the A side you can find the socket for power supply.

- A1 – spare
- A2 – spare
- A3 – spare
- A4 - (+12Volt) steady plus \* (yellow)
- A5 – (+) electric antenna (blue)
- A6 – spare
- A7 - (+12Volt) ignition plus \*(red)
- A8 – (-) minus / ground (black)


\* - Some vehicle manufacturers use their own pin assignment. Especially the terminals A7 (ignition plus) and A4 (steady plus) are often interchanged. The incorrect connection in this case leads to following problem: the unit can not be turned on if the ignition is off and all the saved settings are lost as soon as the unit will be turned off. If these problems appear the connections A4 and A7 should be interchanged.

### Socket B (loud speakers)

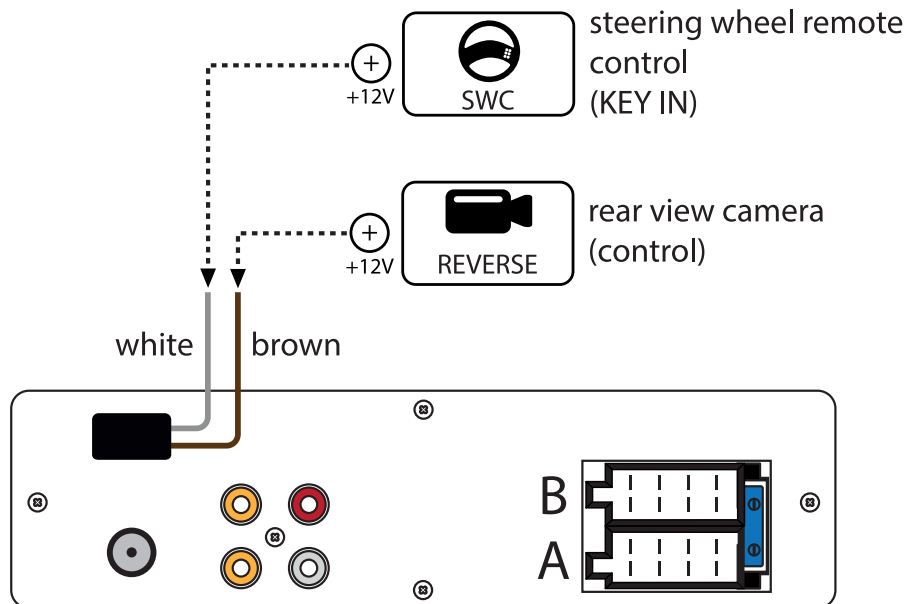
On the B side you can find the speakers terminals.

- B1 – (+) rear right (violet)
- B2 – (-) rear right (violet/black)
- B3 – (+) front right (gray)
- B4 – (-) front right (gray/black)
- B5 – (+) front left (white)
- B6 – (-) front left (white/black)
- B7 – (+) rear left (green)
- B8 – (-) rear left (green/black)

The terminals are coloured by pairs, in each case one (+) and one (-).

 Though the design of ISO plug is standardized, it's pin assignment is not and may vary. Thus in case of mismatch of connections due to different pin assignments a simple plug'n'play connection may lead to grievous errors.

## Rear view camera and steering wheel remote control



### Connect control cable for rear view camera:

Connect the "REVERSE" - rear view camera control cable (brown) to +12V on-board power supply. The radio automatically switches to rear view camera operating mode as soon as reverse gear is engaged. The display shows the video signal from the rear view camera.

If you change gear, the radio automatically returns to the previously active mode.

### Connect steering wheel remote control:

If you have a steering wheel remote control, please connect the "SWC cable" (white) to the Canbus control cable (KEY-IN) for the steering wheel remote control in your vehicle.

You can find out which cable is a control cable in your vehicle from the instructions for your vehicle or ask your technician at the specialist workshop.

## Common solutions

The following advices are generally valid and refer to diverse Xomax models with the similar characteristics. Please note that some articles may refer not to your model exactly and contain the description of features and functions that your model does not support.

The description of the problem	The cause and the solution
<p><b>The remote control is without function.</b></p>	<p><i>Solution 1:</i> Please ensure that the battery film is removed. By delivery the battery is protected by a film which should be removed before usage.</p> <p><i>Solution 2:</i> The battery could be empty. Please replace it if required.</p> <p><i>Solution 3:</i> Please make sure that the infrared receiver (labelled with IR) on the control panel is not blocked.</p> <p><i>Note:</i> You can test the functionality of the remote control as follows: please hold the IR transmitter towards a camera (e.g. a cell phone camera) and press any button on the remote control. If the remote control is operative you can see the infrared signal on the display of the used camera device.</p>
<p><b>The unit does not turn on.</b></p>	<p>This problem is in most cases caused due to a wrong connection of the ISO cable. Please review the pin assignments of the ISO cable and ISO plug. Pay attention to the proper connection of the ignition- and steady plus and correct the discrepancy if required.</p> <p><i>Note:</i> Though the design of ISO plug is standardized, it's pin assignment is not and may vary. Thus in case of mismatch of connections due to different pin assignments a simple plug'n'play connection may lead to grievous errors.</p>

<p><b>Poor radio reception:</b> The radio tuner finds no broadcaster or the reception is poor.</p>	<p>For problem-solving regarding the radio reception it is important to know the type of the antenna of your vehicle.</p> <p>Here are the possible solutions for each type of the antenna:</p> <p><b>Type 1 – passive antenna:</b> We recommend you to substitute the existing antenna by the larger and therefore more efficient one.</p> <p>Shark fin or rod antennas (under 5 cm) are definitely insufficient.</p> <p><b>Type 2 – active antenna:</b> The vehicle provides no current for the active antenna. In this case a phantom power is required, which provides the active antenna with the external power supply.</p> <p><b>Type 3 – active antenna with diversity system:</b> The unit provides no current for the active antenna and has no diversity support. For this type of antenna is required the phantom power with an integrated diversity system.</p> <p><i>Note:</i> A phantom power is not to be confused with an antenna amplifier which is far less efficient.</p>
<p><b>Radio stations are lost:</b> As soon as the unit will be turned off all the stored stations and users settings will be lost.</p>	<p>This problem is caused due to a wrong connection of the ISO cable.</p> <p>Please interchange the cables for ignition plus and for steady plus.</p> <p><i>Caution:</i> If these wires have fuses the latter should be interchanged as well.</p>



## Recycling of an old unit

User information regarding recycling of electric and electronic devices (private households)



**WEEE: DE19856609**

This symbol on products or in their manuals implies that electric and electronic devices at the end of their service life should be separated from the domestic waste.

Please hand these products for recycling at municipal collection points free of charge.

The proper disposal of these products contributes to environment protection.

To find the nearest collection point or recycling yard please consult your municipal administration.

## Recycling of the battery

According to the battery decree we make you aware of your obligation to dispose of empty batteries at municipal collection points.

Batteries that contain pollutants (e.g. Hg = mercury, Pb = lead, Cd = cadmium) are labelled with the symbol pictured above.

At our place you can free dispose of the empty batteries purchased at our store.

Made for STEL Multimedia GmbH  
Paewesiner Weg 20  
13581 Berlin  
GERMANY